

**Swipe Imprint Area:**

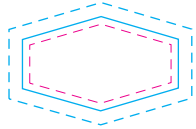
0.812" x 0.491"

**Card Size:**

2.75" x 4.6"

\*CMYK print only

\*PMS colors will be converted to CMYK



Imprint Color:  
CMYK

-  CUT line
-  Image Area
-  Bleed

\*Swipes are designed to stick to smooth, flat surfaces and not recommend for textured or curved surfaces.

\*Exact color matching on both the swipe and printed marketing card are not possible due to the manufacturing process.

\*PMS color matching available for printed card only: \$500 (X).

\*Please note: Due to the material characteristics of the micro fiber swipe, no PMS color matching is available on this material. All colors will be printed as close as possible to requested art and some color variances are considered normal.

\*\*Variances in the centering and printing on the micro fiber swipe are a normal part of the manufacturing process due to the handmade nature of the product.

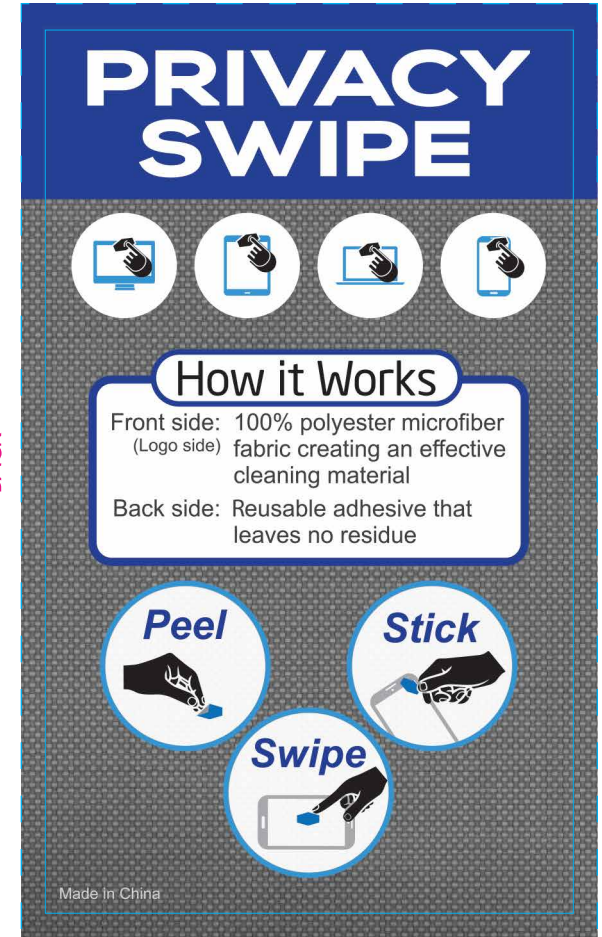
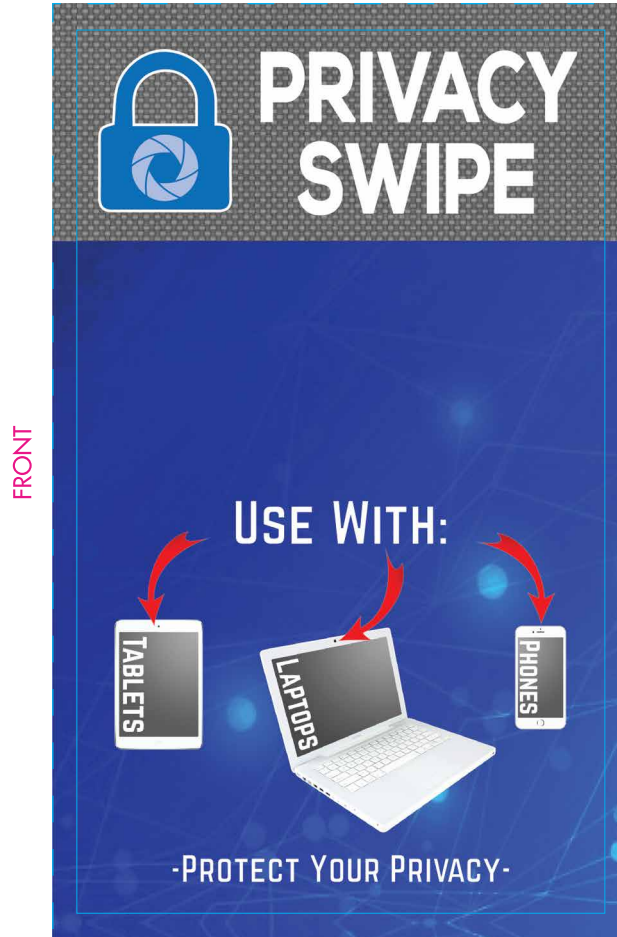
# Privacy Swipe - Small

## 8613910

6700000

00.00.00

Final Fiery



THESE INSTRUCTIONS WILL BE IMPRINTED ON THE REAR SIDE OF THE CARD IF NO ARTWORK IS SUPPLIED.

### PLEASE PROOF ALL ARTWORK CAREFULLY!

Cleggpromo is not responsible or liable for any art errors once layout and design have been approved by your company. The enclosed artwork supersedes any prior artwork or layout from a virtual design or emailed proof.

**ARTWORK DISCLAIMER:** CleggPromo makes every effort to ensure customer satisfaction with our product decoration. When concerns arise, recommendations will be made for best results based on our expertise and experience with every product and decoration method. If, after our recommendations have been communicated, your customer decides to forgo those recommendations and approve the proof as is, CleggPromo will not be held responsible in any way. As a result, no credits or returns will be accepted on your order.

**Please ensure that all art meets these guidelines:** \*All type should be outlined or converted to curves

\*Normal type smaller than 5 points or reversed, serif, and italic types smaller than 7 points may fill in

\*All lines must be thicker than 0.5 points, and all gaps must be wider than 0.75 points to print clearly

\*Registration/trade marks may fill in unless they are enlarged to print clearly

-This proof shows approximate product/imprint color appearance due to variance in computer monitors and printing materials -

-Dashed Magenta and Cyan lines show cut and images areas and will not print -